



HOUSE & LAND PACKAGE

Lot 1604 Inshore Drive, Torquay

QUAY 2

FROM \$1,119,000

The BELLBRAE 30

4 Bed | 2 Bath | 2 Garage | 2 Living

House Size: 30.50SQ

Block Size: 486m²

High End Inclusions:

- Combination of External Claddings
- Colorbond Steel Roof, Fascia & Downpipes
- Engineered Raft Concrete Slab (not Waffle Pod Slab)
- Spotted Gum Timber Decking to Entry
- 2550 High Ceilings & Raked Ceilings
- Square Set Cornices
- Polished Concrete Floors (Ground Floor)
- Blackbutt Timber Floors (First Floor)
- Caesarstone Benchtops 20mm - 60mm thickness
- Frameless 2100mm High Glass Shower Screens
- Feature Spotted Gum Timber Posts
- Covered Alfresco (Deck Optional)
- Gas Ducted Heating (optional cooling available)
- Built in Shelving to all Bedroom Robes

Energy Efficient Inclusions:

- 6 Star Energy Rating
- High Performance Insulation
- Rinnai Instantaneous Hot Water System
- Rainwater Tank with Pump plumbed to Toilets
- Ceiling Fans to Living & Bedrooms
- Double Glazed Windows & Stacker Sliding Doors
- Low Voltage LED Downlights throughout

You can view all House & Land Packages at www.pivohomes.com.au



First Floor

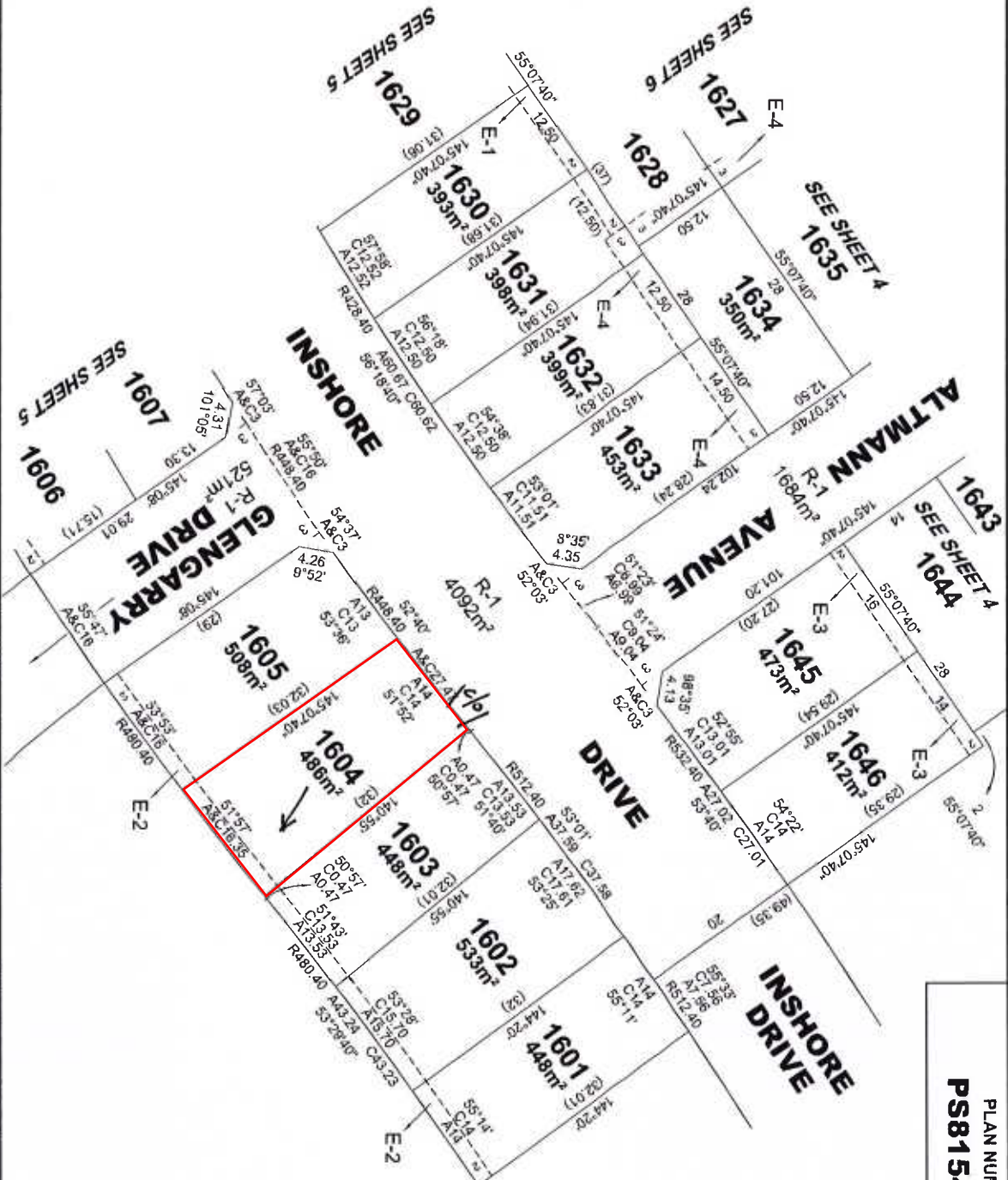


Ground Floor

DISCLAIMER: Pricing is subject to a detailed contour survey and geo-tech soil report. Plans and images are for illustration purposes only. Floor plan and elevation as shown in this brochure are an artist's impression only and do not form any part of the contract to build. Standard plans and specifications take precedence over any design, elevation or brochure. These designs are copyright to Pivot Homes. Pivot Homes reserves the right to alter any of its specifications due to the availability of some items, its continual product development or Developers Estate Guidelines.



PLAN NUMBER
PS815496X



WARNING
THIS PLAN IS NOT TO BE USED FOR CONSTRUCTION OR ANY OTHER PURPOSES WITHOUT THE WRITTEN APPROVAL OF THE SURVEYOR.

REF: 21437/16PS C
VERSION: C
DATE: 24/09/18
21437-16-PS-M-C-DGN

REEDS CONSULTING
Reeds Consulting Pty Ltd
Level 4, 440 Elizabeth Street
Melbourne Victoria 3000
www.reeds.com.au
P (03) 9600 3000
survey@reedsconsulting.com.au

SCALE 1:500
L1
L2
L3
L4
L5
L6
L7
L8
L9
L10
L11
L12
L13
L14
L15
L16
L17
L18
L19
L20
L21
L22
L23
L24
L25
L26
L27
L28
L29
L30
L31
L32
L33
L34
L35
L36
L37
L38
L39
L40
L41
L42
L43
L44
L45
L46
L47
L48
L49
L50
L51
L52
L53
L54
L55
L56
L57
L58
L59
L60
L61
L62
L63
L64
L65
L66
L67
L68
L69
L70
L71
L72
L73
L74
L75
L76
L77
L78
L79
L80
L81
L82
L83
L84
L85
L86
L87
L88
L89
L90
L91
L92
L93
L94
L95
L96
L97
L98
L99
L100
L101
L102
L103
L104
L105
L106
L107
L108
L109
L110
L111
L112
L113
L114
L115
L116
L117
L118
L119
L120
L121
L122
L123
L124
L125
L126
L127
L128
L129
L130
L131
L132
L133
L134
L135
L136
L137
L138
L139
L140
L141
L142
L143
L144
L145
L146
L147
L148
L149
L150
L151
L152
L153
L154
L155
L156
L157
L158
L159
L160
L161
L162
L163
L164
L165
L166
L167
L168
L169
L170
L171
L172
L173
L174
L175
L176
L177
L178
L179
L180
L181
L182
L183
L184
L185
L186
L187
L188
L189
L190
L191
L192
L193
L194
L195
L196
L197
L198
L199
L200
L201
L202
L203
L204
L205
L206
L207
L208
L209
L210
L211
L212
L213
L214
L215
L216
L217
L218
L219
L220
L221
L222
L223
L224
L225
L226
L227
L228
L229
L230
L231
L232
L233
L234
L235
L236
L237
L238
L239
L240
L241
L242
L243
L244
L245
L246
L247
L248
L249
L250
L251
L252
L253
L254
L255
L256
L257
L258
L259
L260
L261
L262
L263
L264
L265
L266
L267
L268
L269
L270
L271
L272
L273
L274
L275
L276
L277
L278
L279
L280
L281
L282
L283
L284
L285
L286
L287
L288
L289
L290
L291
L292
L293
L294
L295
L296
L297
L298
L299
L300
L301
L302
L303
L304
L305
L306
L307
L308
L309
L310
L311
L312
L313
L314
L315
L316
L317
L318
L319
L320
L321
L322
L323
L324
L325
L326
L327
L328
L329
L330
L331
L332
L333
L334
L335
L336
L337
L338
L339
L340
L341
L342
L343
L344
L345
L346
L347
L348
L349
L350
L351
L352
L353
L354
L355
L356
L357
L358
L359
L360
L361
L362
L363
L364
L365
L366
L367
L368
L369
L370
L371
L372
L373
L374
L375
L376
L377
L378
L379
L380
L381
L382
L383
L384
L385
L386
L387
L388
L389
L390
L391
L392
L393
L394
L395
L396
L397
L398
L399
L400
L401
L402
L403
L404
L405
L406
L407
L408
L409
L410
L411
L412
L413
L414
L415
L416
L417
L418
L419
L420
L421
L422
L423
L424
L425
L426
L427
L428
L429
L430
L431
L432
L433
L434
L435
L436
L437
L438
L439
L440
L441
L442
L443
L444
L445
L446
L447
L448
L449
L450
L451
L452
L453
L454
L455
L456
L457
L458
L459
L460
L461
L462
L463
L464
L465
L466
L467
L468
L469
L470
L471
L472
L473
L474
L475
L476
L477
L478
L479
L480
L481
L482
L483
L484
L485
L486
L487
L488
L489
L490
L491
L492
L493
L494
L495
L496
L497
L498
L499
L500
L501
L502
L503
L504
L505
L506
L507
L508
L509
L510
L511
L512
L513
L514
L515
L516
L517
L518
L519
L520
L521
L522
L523
L524
L525
L526
L527
L528
L529
L530
L531
L532
L533
L534
L535
L536
L537
L538
L539
L540
L541
L542
L543
L544
L545
L546
L547
L548
L549
L550
L551
L552
L553
L554
L555
L556
L557
L558
L559
L560
L561
L562
L563
L564
L565
L566
L567
L568
L569
L570
L571
L572
L573
L574
L575
L576
L577
L578
L579
L580
L581
L582
L583
L584
L585
L586
L587
L588
L589
L590
L591
L592
L593
L594
L595
L596
L597
L598
L599
L600
L601
L602
L603
L604
L605
L606
L607
L608
L609
L610
L611
L612
L613
L614
L615
L616
L617
L618
L619
L620
L621
L622
L623
L624
L625
L626
L627
L628
L629
L630
L631
L632
L633
L634
L635
L636
L637
L638
L639
L640
L641
L642
L643
L644
L645
L646
L647
L648
L649
L650
L651
L652
L653
L654
L655
L656
L657
L658
L659
L660
L661
L662
L663
L664
L665
L666
L667
L668
L669
L670
L671
L672
L673
L674
L675
L676
L677
L678
L679
L680
L681
L682
L683
L684
L685
L686
L687
L688
L689
L690
L691
L692
L693
L694
L695
L696
L697
L698
L699
L700
L701
L702
L703
L704
L705
L706
L707
L708
L709
L710
L711
L712
L713
L714
L715
L716
L717
L718
L719
L720
L721
L722
L723
L724
L725
L726
L727
L728
L729
L730
L731
L732
L733
L734
L735
L736
L737
L738
L739
L740
L741
L742
L743
L744
L745
L746
L747
L748
L749
L750
L751
L752
L753
L754
L755
L756
L757
L758
L759
L760
L761
L762
L763
L764
L765
L766
L767
L768
L769
L770
L771
L772
L773
L774
L775
L776
L777
L778
L779
L780
L781
L782
L783
L784
L785
L786
L787
L788
L789
L790
L791
L792
L793
L794
L795
L796
L797
L798
L799
L800
L801
L802
L803
L804
L805
L806
L807
L808
L809
L810
L811
L812
L813
L814
L815
L816
L817
L818
L819
L820
L821
L822
L823
L824
L825
L826
L827
L828
L829
L830
L831
L832
L833
L834
L835
L836
L837
L838
L839
L840
L841
L842
L843
L844
L845
L846
L847
L848
L849
L850
L851
L852
L853
L854
L855
L856
L857
L858
L859
L860
L861
L862
L863
L864
L865
L866
L867
L868
L869
L870
L871
L872
L873
L874
L875
L876
L877
L878
L879
L880
L881
L882
L883
L884
L885
L886
L887
L888
L889
L890
L891
L892
L893
L894
L895
L896
L897
L898
L899
L900
L901
L902
L903
L904
L905
L906
L907
L908
L909
L910
L911
L912
L913
L914
L915
L916
L917
L918
L919
L920
L921
L922
L923
L924
L925
L926
L927
L928
L929
L930
L931
L932
L933
L934
L935
L936
L937
L938
L939
L940
L941
L942
L943
L944
L945
L946
L947
L948
L949
L950
L951
L952
L953
L954
L955
L956
L957
L958
L959
L960
L961
L962
L963
L964
L965
L966
L967
L968
L969
L970
L971
L972
L973
L974
L975
L976
L977
L978
L979
L980
L981
L982
L983
L984
L985
L986
L987
L988
L989
L990
L991
L992
L993
L994
L995
L996
L997
L998
L999
L1000

ORIGINAL SHEET
SIZE A3

SHEET 3

LICENSED SURVEYOR
TOMAS CHAMPION

Preliminary Services

Earthworks/Slab/Framing



- Earthworks and Engineered Raft Slab



- Colour Selection with Interior Designer



PRELIMINARY

- Building Permit Application Fees
- Soil Test and Detail Feature Survey
- Professional Colour Selection Service with Interior Designer
- Home Owner's Warranty Insurance
- Contract Documentation including Working Drawings, Engineering and BAL Assessment



SERVICES

- Electricity Connection up to 10m from Electricity Pit to Meter Box
- Water Connection up to 10m from Front Setback
- Gas Connection up to 10m from Front Setback
- Sewer Connection up to 10m from House
- Stormwater Connection up to 10m from Dwelling to Legal Point of Discharge

SLAB/EARTHWORKS

- Engineered 'M' Class Concrete Raft Slab (not a Waffle Pod Slab)
- Earthworks including Levelling of Building Platform (Provisional Sum \$2,000)

TIMBER FRAMING

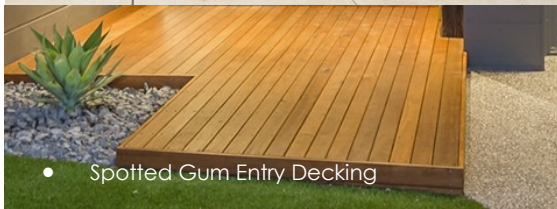
- Termite Treated Timber Frame Walls with Studs at 450mm (not 600mm)
- Timber Roof Trusses with Metal Ceiling Battens



External Fixtures and Finishes



- Low Maintenance Architectural Claddings



- Spotted Gum Entry Decking



- Colorbond Steel Roof, Facia & Downpipes



- Motorised Panelift Garage Door



- Feature Spotted Gum Timber Posts

- Combination of External Claddings i.e. Foam Render Cladding, James Hardie 'Scyon Stria/Axon' (as per plans)
- Solver Exterior Acrylic Paint to any External Painted Surfaces
- Pre-Oiled Spotted Gum Timber Decking to Entry with Pre-Drilled Countersunk Screws
- Gainsborough Trilock Contemporary Angular Leverset Entry Door Furniture (Choose from Bright Chrome, Satin Chrome or Matte Black)



- Colorbond Roof, Facia and Down Pipes (Roof Includes Sarking)



James Hardie

Colorbond



- Colorbond Panelift Garage Door with 2 Handset Remotes & 1 Wall Mounted Remote
- Double Glazed Powder Coated Aluminium Keyed Locked Windows and Sliding Glass Doors (as per plans)
- Fly Wire Screens to all operable windows
- Hume Solid Core Front Entry Door 2040mm x 920mm
- Feature Spotted Gum Timber Posts 200mm x 200mm (as per plans)
- Stainless Steel Wire & Posts to External Balconies/Decking/ Stairs (Double Storey Homes)



- Double Glazed Glass Windows & Doors



Internal Fixtures and Finishes



- Square Set Cornices & Raked Ceilings

- Polished Concrete Floors

- 2550mm (8ft6in) High Ceilings with Raking/Raised Ceiling (as per plans) with Square Set Cornices throughout (75mm cove cornice to garage)
- Polished Concrete Floors with Retroplate Finish (Ground Floor only)
- Blackbutt Timber Floors to Kitchen, Living & Dining with Ceramic/Porcelain Floor Tiles to Bathrooms/Ensuites/WC/PDR (First Floor Double Storey Homes)
- Carpet with Gold Airstep Rubber Underlay (PC \$45 per sqm)
- Solver Washable Satin Finish Acrylic Paint to Internal Walls (1 Colour - 3 Coat System)
- Matte Finish Acrylic Paint to Ceilings (1 Colour - 2 Coats)



- 2040mm High Flush Panel Premium Skin Redicoat Doors
- Flush Panel Solid Core Door to Garage with Deadlock
- Gainsborough G2 Range Door Furniture (Choose from Bright Chrome, Satin Chrome or Matte Black & Round or Square Back Plates)
- Gainsborough Satin Chrome Black Rubber Door Stops

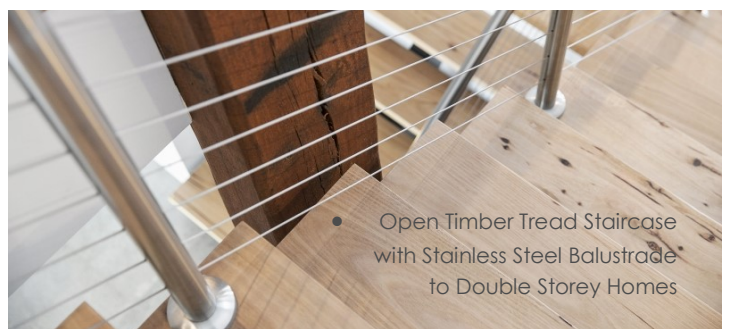


- 3 Coat Paint System to Internal Walls



- Blackbutt Floors to First Floor of Double Storey Homes

- 92mm Skirtings & 67mm Solid Timber Single Bevel Architraves (not MDF) painted in Solver Gloss Enamel Paint (2 coats)
- Built In Robes include Melamine Shelf, Hanging Rail, Bank of Shelves with Regency Robe Sliding Doors (White Colour Back Glass with Metal Frame)
- Walk In Robes include Melamine Shelf, Hanging Rail and 2 Banks of Shelves with 4 Drawers (or as per plans)
- Internal Staircase includes Steel Stringer, Open Blackbutt Timber Treads and Stainless Steel Balustrade Wire and Posts (Double Storey Homes)



- Open Timber Tread Staircase with Stainless Steel Balustrade to Double Storey Homes

Internal Fixtures and Finishes



- Soft Closing Mechanisms to Joinery
- Laminex & Polytec Laminates

- Glass Splashback
- 900mm Technika Freestanding Oven

- Overhead Cupboards with Bulkhead

- Caesarstone Benchtops

- Laundry Joinery in Laminex and/or Polytec Laminates

KITCHEN

- Clark Round Blade Sink Mixer (Choose from Chrome or Matte Black)



CLARK

- Clark Vital Double Bowl Kitchen Sink with Drainer
- Clark Round Bowl Overmount or Undermount to Kitchenette/WIP Sink (as per plans)



- Technika Stainless Steel 900mm Freestanding Oven/Cooktop
- Technika Stainless Steel 900mm Undermount Rangehood
- Technika Stainless Steel Dishwasher
- Laminex and/or Polytec Laminates in Natural Finishes to Hinged Doors, Cutlery and Pot Drawers
- White Melamine Lined Cupboards and Drawers
- Soft Closing Mechanism to Hinged, Cutlery and Pot Drawers
- Overhead Cupboards with Bulkhead above
- Finger Pull or Push to Open Drawers and Cupboards
- Choice of Glass or Tiled Splashback (Tiles PC \$35 per sqm)
- Caesarstone Kitchen Benchtops (Choose from 20mm – 60mm thickness in either Standard, Deluxe and Premium Ranges)
- Kitchenette/WIP Benchtop (Choose from Laminex or Polytec Laminates in Natural Finishes)
- Microwave provision under bench with Pot Drawer below

LAUNDRY

- Clark Round Blade Sink Mixer (Choose from Chrome, Matte Black or Matte Black/Brass)
- Clark V/Trough 45L including Wall Mounted Washing Machine Stops
- Laminex and/or Polytec Laminates in natural finishes to Laundry Base Cabinet Doors and Benchtop. White Melamine finish to all internal surfaces
- Ceramic or Porcelain Wall Tiles (PC \$35 per sqm) to Laundry Splashback with 100mm High Skirting Tiles
- Linen & Broom Cupboard Redicote Doors to Laundry

Internal Fixtures and Finishes



- Clark Round Blade Mixer & Outlet Bath Set

- Clark Wall Hand Piece

BATHROOM/ENSUITE/WC/POWDER ROOM

- Clark Round Blade Shower Mixer Tapware (Choose from Chrome or Matte Black)



- Clark Round Fixed Wall Arm with Round Shower Rose/ Handpiece or Clark Wall Hand Piece (Choose from Chrome or Matte Black)
- Clark Round Blade Mixer & Outlet Bath Set 220mm (Choose from Chrome or Matte Black)
- Clark Round Blade Wall Mounted Basin Mixer Tapware Set 180mm, OR Clark Round Blade Tower Mixer (Choose from Chrome or Matte Black)
- Clark Round Inset Vanity Basins & Clark Wall to Back Toilets
- Clarke Round Range Towel & Hand Towel Rails, Toilet Roll, Robe Hooks (Choose from Chrome or Matte Black)
- Decina Cortez 1675mm Acrylic White Bath



- Ceramic/Porcelain Wall Tiles up to 300mm x 600mm to Bathroom and Ensuite - Standard Tiling Height (PC \$35 per sqm)
- Double Storey Homes include Floor Tiles to Bathroom/ Ensuities/WC/PDR/Laundry to First Floor
- 100mm High Skirting Tiles to Bathroom, Ensuite and WC
- Frameless 2100mm High Glass Shower Screens
- Insitu Tiled Showers
- Laminex and/or Polytec Laminates in Natural Finishes to Vanity Cabinets
- White Melamine finish to all internal surfaces
- Caesarstone Benchtops (Choose from 20mm – 60mm thickness in either Standard, Deluxe and Premium Ranges)
- Flat Polished Edged Mirrors to Full Width of Vanities in Bathroom, Ensuite, Powder Room

Laminex®

polytec

caesarstone®

Internal Fixtures and Finishes



INSULATION/ENERGY EFFICIENCY/HOT WATER

- R 5.0 Bradford Gold High Performance Insulation to Ceilings
- R 2.5 Bradford Gold High Performance Insulation to External Walls and Bathroom/Toilet Internal Walls
- Double Storey Homes include R 2.5 Bradford Soundscreen Floor Insulation between First Floor and Ground Floor
- 6 Star Energy Rating
- Rinnai Infinity 26 Gas Continuous Flow Hot Water System
- Rainwater Tank with Pump plumbed to Toilets



Rinnai

**Bradford™
gold insulation**

ELECTRICAL

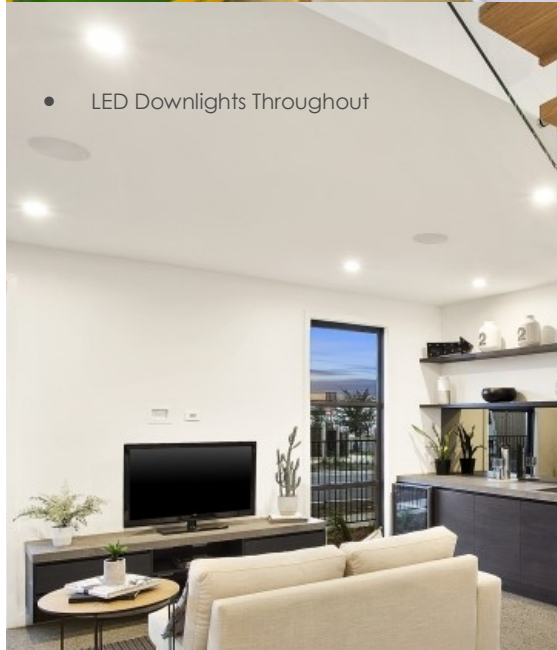
- LED Downlights Throughout

- Low Voltage LED Downlights throughout (Choose from White or Stainless Silver)
- Double Power Points throughout (as per electrical plans)
- Hard Wired Smoke Detectors
- Sealed Exhaust Fan to Showers. Fan Lights to Toilets.
- TV Points (2) – Data Points (2)
- LED Up Lighting to Feature Posts on Front Entry Decking



HEATING/COOLING

- Gas Ducted Heating (includes Controller)
- Please note: Split Systems are included where a Ducted Heating System isn't available
- Hunter Pacific Typhoon 56" Mach 3 Ceiling Fans to Living and Bedrooms (Choose from Brushed Chrome or Matte Black)



Options

The items below are of a pure, personal taste and whilst they may be featured in our Display Home, they are not included in pricing, but available to you as optional items. Items such as Additional Decking, Landscaping, Driveways/Paths, Window Furnishings, Privacy Screens, Fencing, TV/Bar/Study Nook Cabinetry, Overhead Cupboards to Laundry, Hydraulic Hinging to Kitchen Overhead Cupboards, Feature Windows, 2700mm High Ceilings, 60mm-100mm Caesarstone Benchtops, Rylock Windows & Doors, Cooling, Timber Flooring (Ground Floor), Gas Fireplace, Polished Concrete to Garage, Floor to Ceiling Wall Tiling in Wet Areas, Upgraded Tapware, Internal Face Sliding Doors, Undermounted Sinks, Security/Intercom System, Ducted Vacuum, Sound System, Pivot Front Door, Covered Outdoor Areas, Town Planning Applications, Re Establishment Surveys, Installation of Underground Power Pits.

Pivot Homes reserves the right to alter any of its specifications due to the availability of some items or its continual product development.