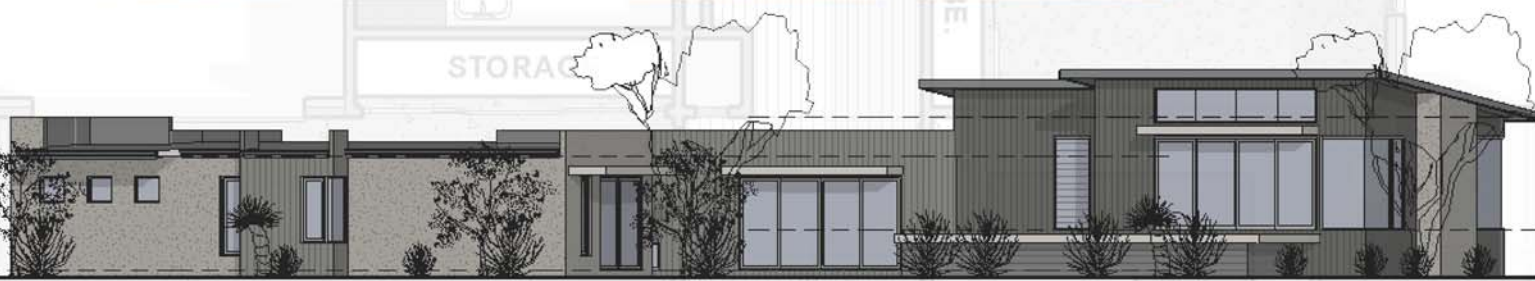




PLATINUM - S33

GROUND FLOOR AREA: 226.30m²
GARAGE AREA: 40.97m²
DECKS: 37.01m²
TOTAL: 304.28m²



Pivot Homes Pty. Ltd.
1 - 5 Field Court, Marshall VIC 3216
Email: info@pivohomes.com.au
Telephone: (03) 5243 2350
Facsimilie: (03) 5243 2440
Web: www.pivohomes.com.au

PIVOT HOMES

MASTER BUILDERS